

PC Replay Baseball V3

INSTALLING AND REGISTERING

OVERVIEW

Please take a moment to read through the entire instructions if you are not familiar with installing programs and running files as administrator. If the following steps are not taken (and taken in order) then the installation may not succeed and you may not have your seasons available for use. A small amount of time taken here may save you frustration later!

WHERE THE PROGRAM GOES

By default the program will be installed in

C:\program files\PC Replay Baseball

However, if you are running 64 bit Windows 7 or Vista then the program will be installed in

C:\program files (x86)\PC Replay Baseball

INSTALLING THE MAIN PROGRAM

Browse to the program download page on the Replay Games website

<http://www.replaybb.com/PCBBPages/PCBBDownloadPage.htm>

LEFT-CLICK the game icon on the download page. Depending on your browser setting the installation file will either automatically download or you will be asked a question similar to the screenshot below. **ALWAYS** select **Save File**, never select Run/Open if you are given that choice.



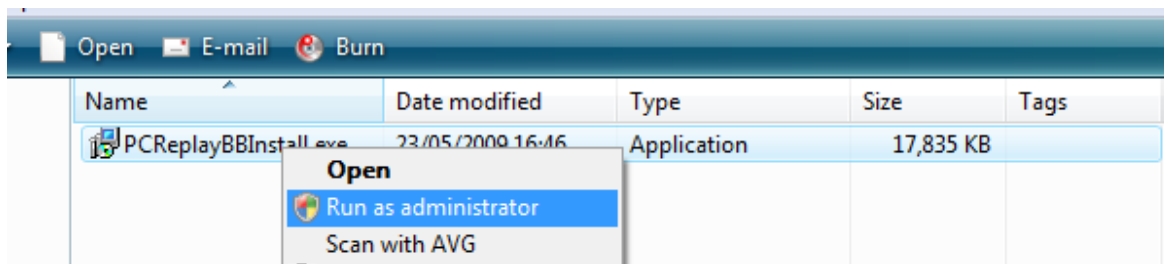
Once the file has been downloaded, **LOCATE** the file on your PC – It may have downloaded to the desktop or to a specific directory. Use windows explorer or an equivalent program to browse to the file **PCReplayBBInstall.exe**

XP/NT

Simply double-click the file to begin the installation process

VISTA and WINDOWS 7

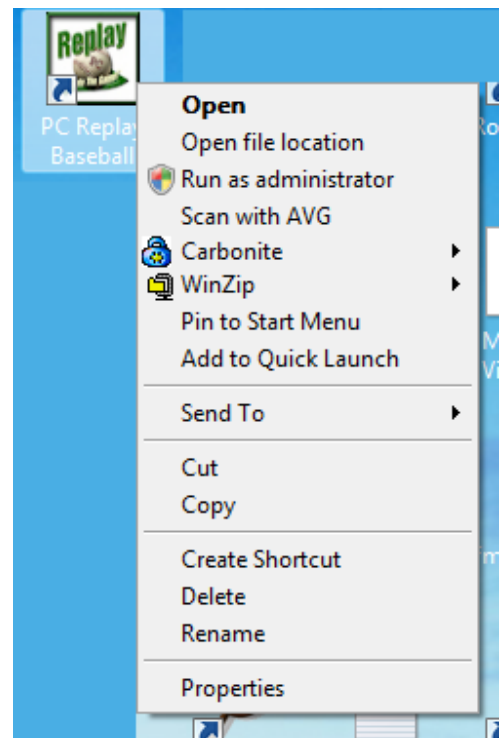
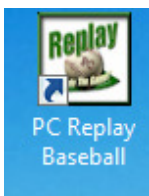
You **MUST** right-click the file and select 'Run as Administrator'.



A message may appear asking you to confirm your decision. Click **Allow**.

On either system, the installation process will now be performed. We recommend keeping the default directory unless there is a very good reason to change it.

Once installation is complete, please return to your desktop. You should see that a shortcut to the game has been placed there.

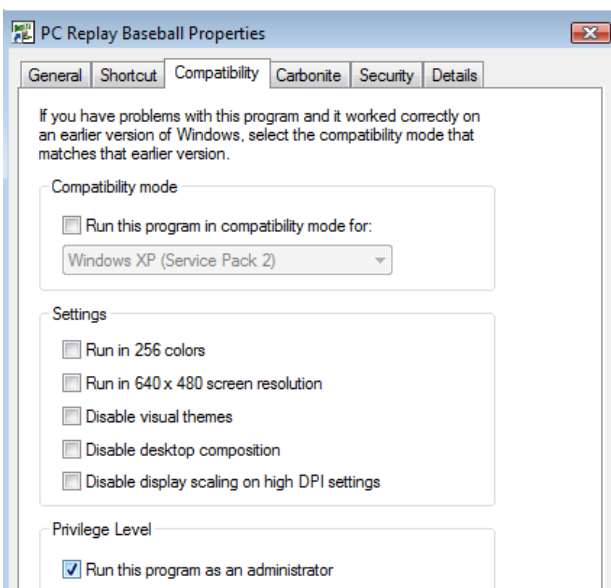


XP/NT

Simply double-click the shortcut to open the program

VISTA and WINDOWS 7

You **MUST** right-click the file, then select **Properties** from the bottom of the menu.



Then, click the Compatibility tab on the next screen, And check the box beside, **Run this program as an administrator**.

Finally click **Apply** and then **Close**

Now you can double-click the shortcut in the normal way to run the program

PURCHASED SEASONS

There are two steps which must be taken in order before a purchased season is ready for play.

PERFORMING A MASTER RESTORE

The program installation will install all seasons in the \Master sub-directory. This makes it impossible for any in progress seasons to be inadvertently over-written.

To create the actual season you need to open the program, click on the **MASTER RESTORE** icon and select your season from the list.

REGISTERING PURCHASED SEASONS

The final step is to actually register the season. This is done by clicking the **REGISTER** icon on the main screen.

If this is the first season you have purchased (or the first season purchased after installing version 3) then you need to follow the instructions on the registration screen to copy the machine ID to the clipboard, paste it into an e-mail and send the e-mail to register@replaybb.com

You will then receive a registration code which covers all your purchased seasons by e-mail with full instructions on how to register your season. An example is shown below.

Registering your purchased seasons

RBB:98DXV1432D05

This is your unique registration ID which covers all your PC Replay Baseball purchases.

Please copy the entire code (including the RBB: part) to the clipboard, then open the program and click the Registration icon.

Your code should automatically appear in the registration box and the Register button will be active. Click this to register the products.

If the code does not automatically appear then right-click the registration box and the code should automatically paste into the box.

(To copy the registration ID from this e-mail to the clipboard, highlight the entire code, right-click and select copy.)